

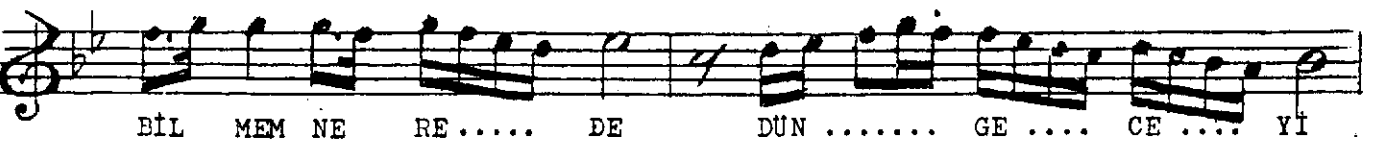
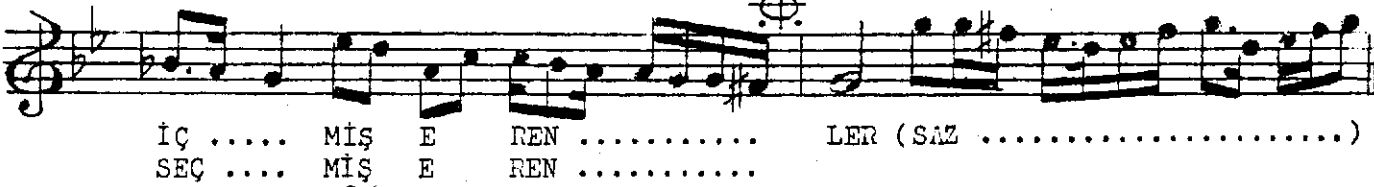
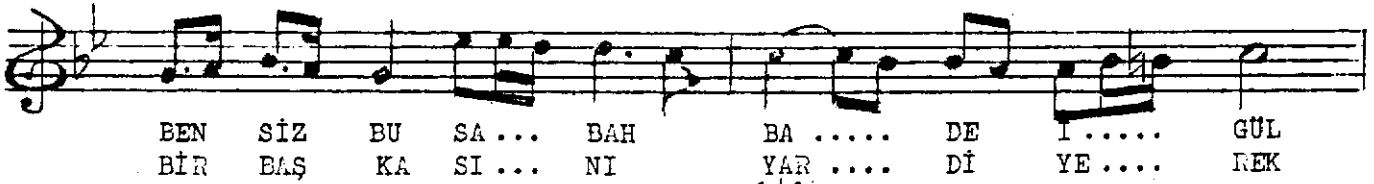
NIHAVEND ŞARKI

Güfte ve Beste

Usulü: SENGİN SEMAİ (Zannım o güzel, sine-i dil açmış erenler)

AHMET UZEL

(♩ = 63)



ZANNIM O GÜZEL, SİNE-İ DİL AÇMIŞ ERENLER  
BENSİZ BU SABAH BÂDE-İ GÜL İÇMİŞ ERENLER  
BİLMEM NEREDE DÜN GECEYİ GEÇMİŞ ERENLER  
BİR BAŞKASINI YAR DİYEREK SEÇMİŞ ERENLER